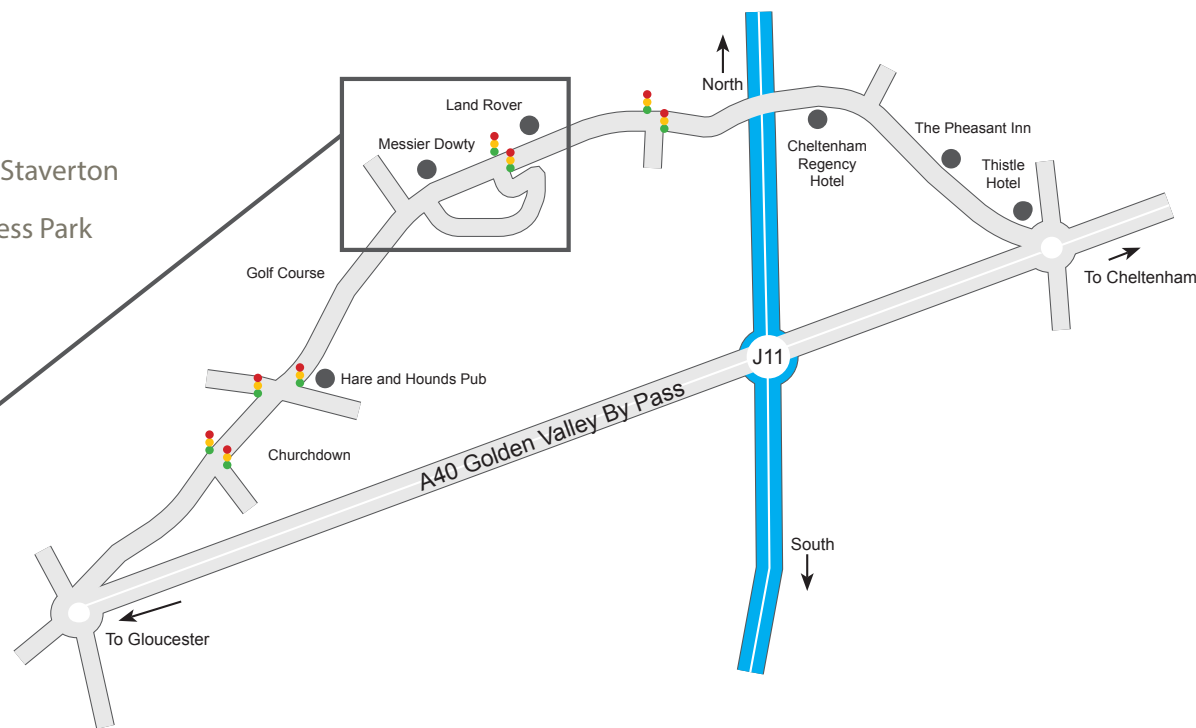
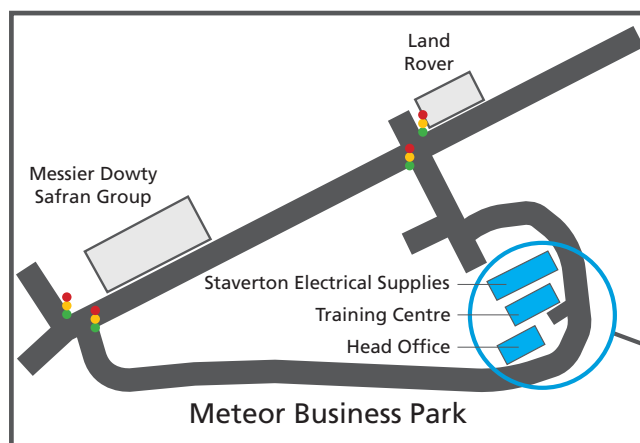


# How to find our Head Office at Meteor Business Park

HR | IT | Marketing | Operations | Reception | Training | Vehicle Workshop

- > Leave the M5 at junction 11 (not 11a)
- > Take the A40 towards Cheltenham
- > At the next roundabout take the first exit (B4063) signposted to Staverton
- > At the second set of traffic lights, turn left into the Meteor Business Park
- > Our training centre is situated next to our head office



## Parking instructions

Parking spaces for course delegates can be found along the roadside next to the airport perimeter fence (shown in blue on the diagram). If all delegate spaces have been taken, the red areas shown are for overflow parking. You will need to display a valid parking permit, which can be obtained from our training centre reception on arrival.

